



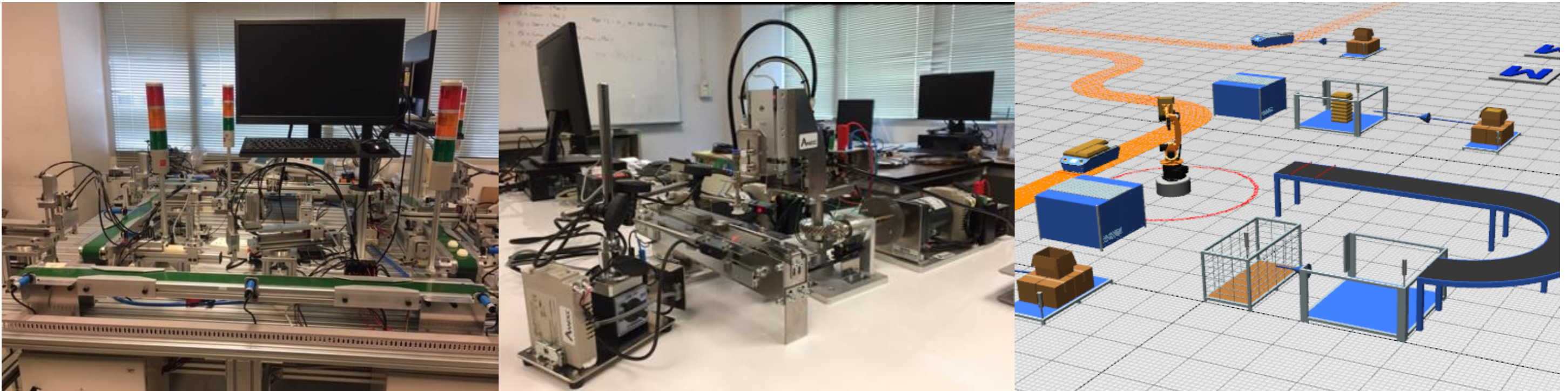
AIE&T
Advanced Industrial Engineering & Technology Research Laboratory

Advanced Industrial Engineering & Technology Research Laboratory

Key Research: Precision Measurement, Condition Monitoring, Automation Manufacturing, Process Design, System Integration, TPM, TPS, TQM, and Optimization.

Research Theme

Automation Manufacturing and Simulation

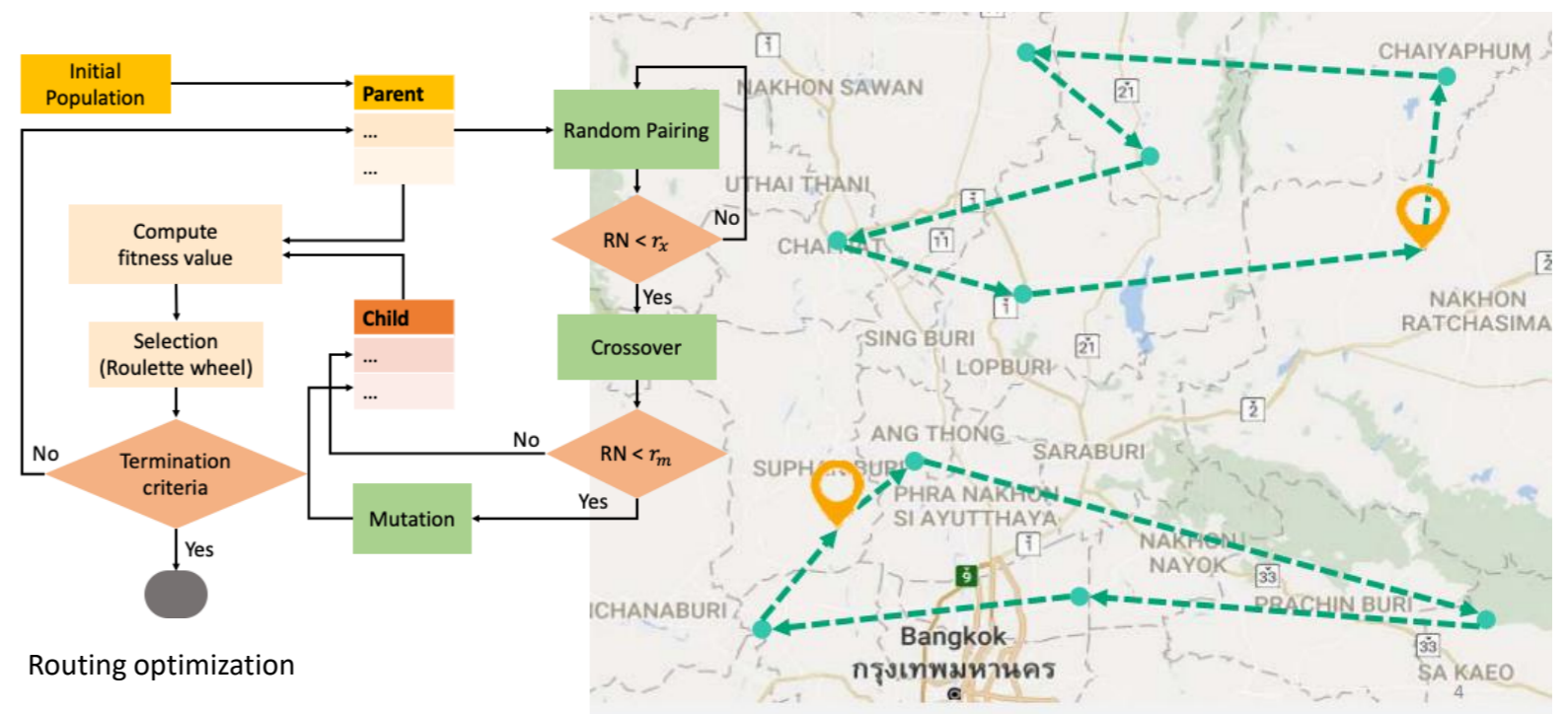


Precision Measurement

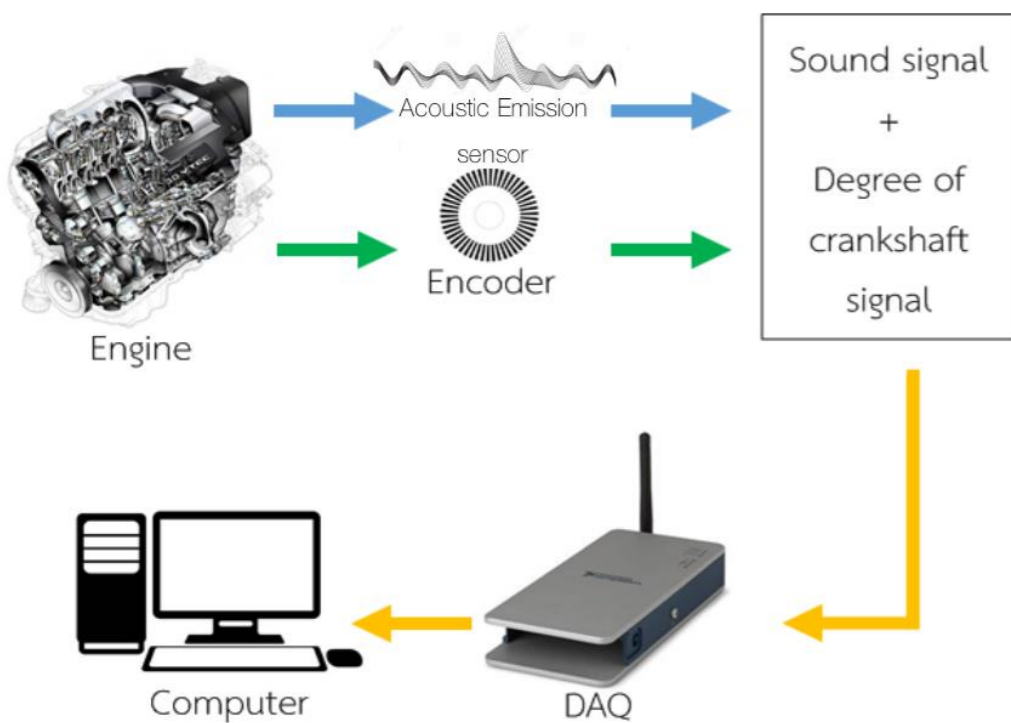


Machine Precision with Laser Interferometer

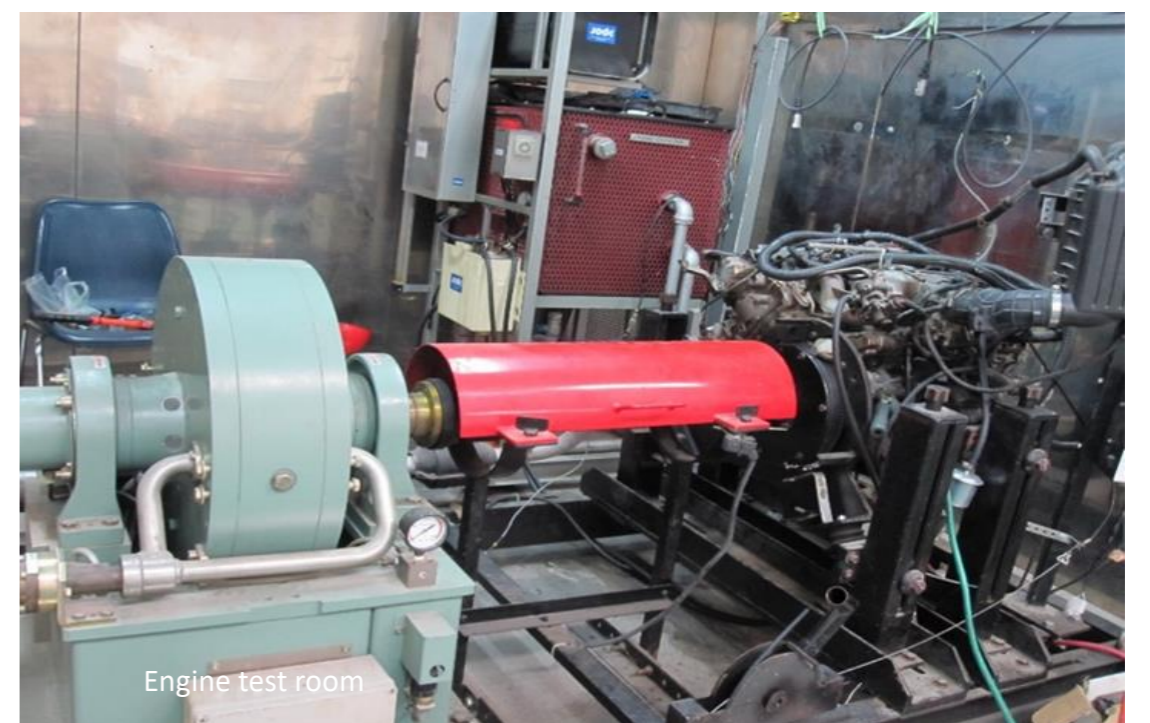
Optimization



Condition Monitoring



Equipment workbench



Engine test room

Contact person

Dr. Watcharin Noothong (Head of Research Lab)
E-mail: watcharin@tni.ac.th